

ANNUAL REPORT

2021 - 2022



PHOTO: Pragma



PREAMBLE

Pragya works to design and deliver solutions to address the needs of the last mile, vulnerable communities in India and to conserve the natural ecosystems. The organisation strives to achieve sustainable development for neglected and marginalised groups and to leave no one behind. In **2021-22**, Pragya expanded its programmes on climate adaptation, and disaster management to new geographies, strengthened its initiatives to support community livelihoods, improving services in education and health, for remote rural communities, urban slum dwellers and migrants and initiated new interventions to empower informal workers.

Pragya works for transformative change towards sustainable and equitable development. The programmes evolve over time based on participatory research and stakeholder consultations, factoring in the changing needs of communities and ecosystems. The programmes equip the local communities with tools and know-how to propel themselves to social and economic prosperity. Pragya brings people together for collaborative action, building long-term relationships through sensitive dialogue and sustained engagement.

In **2021-22**, as the communities and stakeholders still grappled with the effects of the COVID-19 pandemic, our initiatives focused on building community resilience and adapting a hybrid approach for our programme delivery by leveraging digital tools and ICT infrastructure. In this context, our emergency relief support, skill-building programmes and other economic enablers/support to marginalised groups were at the heart of all recovery and resilience-building initiatives, benefitting small and marginal farmers, women and informal workers to address multi-dimensional poverty and food security-related challenges in rural and urban areas. We also enhanced our youth-anchored initiatives for climate-smart agriculture, biodiversity conservation and disaster risk reduction. Continuing our efforts to improve access to quality education, healthcare, safe water and sanitation, we worked with community and local stakeholders to deliver and advocate for improved services. We conducted awareness campaigns and hosted multi-stakeholder advocacy events, to spur dialogues on developing responsible trade linkages, conserving natural resources and addressing persisting inequalities.

ABOUT PRAGYA



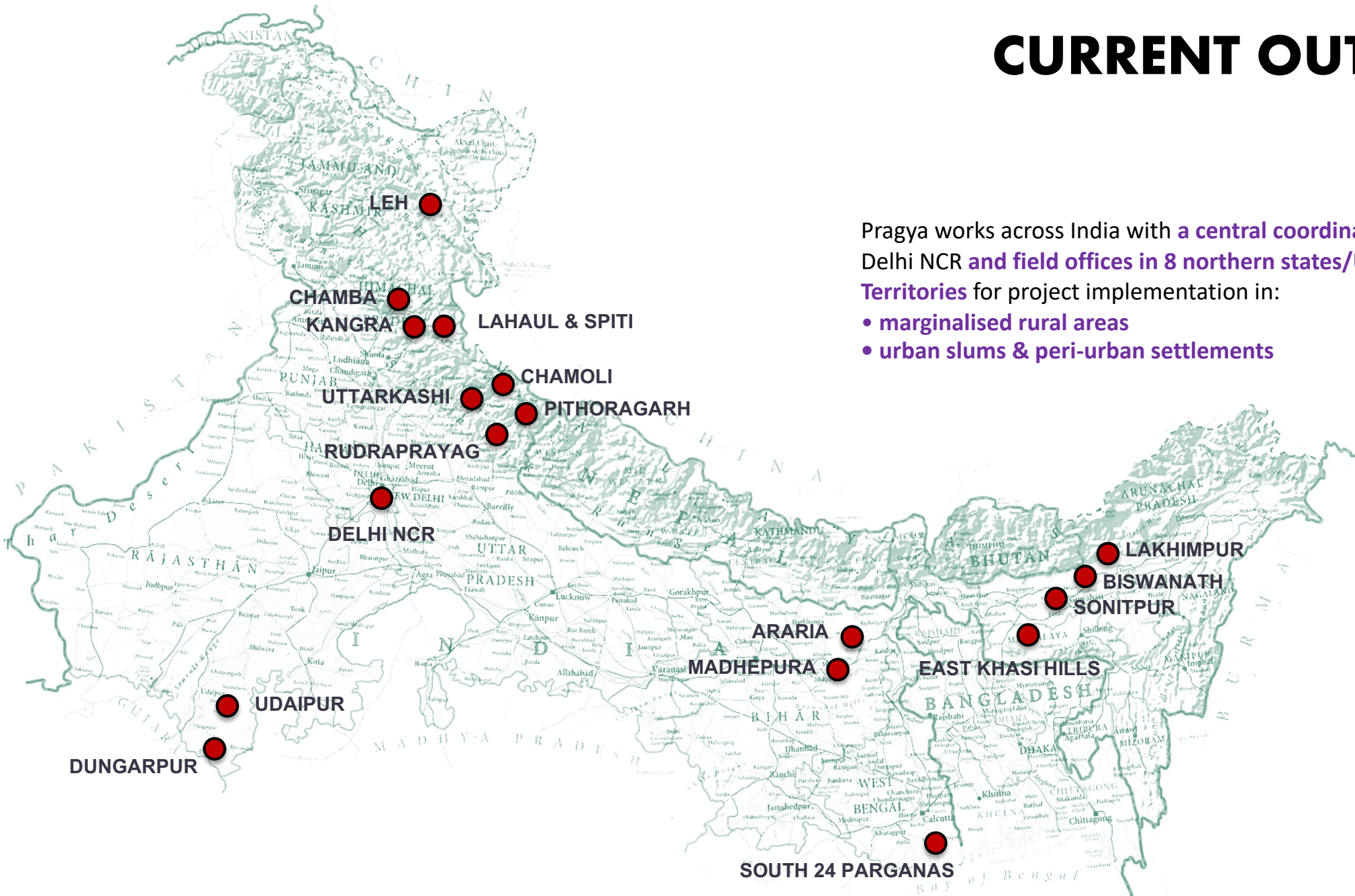
Pragya's mission is to shape and enable holistic, sustainable development with a focus on vulnerable and neglected communities in India. In all its programmes and advocacy efforts, the organisation upholds the core values - '[Development without Destruction](#)' and '[Empowerment for Enabling Choices](#)'.

We undertake a combination of grassroots development interventions, scientific and policy research and advocacy efforts, guided by the values of cultural-sensitivity and ecological integrity. Pragya was established in 1995. The organisation has grown substantially since its inception, developing expertise in a diverse range of thematic areas including social development, natural resource management, infusion of appropriate technologies, livelihood and enterprise development.

Pragya (India) is registered as a Trust, is registered with Niti Ayog, Government of India ([Darpan ID HR/2017/0150842](#)) and has FCRA (Foreign Contribution Regulation Act) certification. Based on its scientific expertise, the organisation is recognised as a [Scientific and Industrial Research Organisation \(SIRO\)](#) by the Department of Scientific and Industrial Research under the Ministry of Science & Technology, Government of India. Pragya has [GuideStar India Platinum Certification](#) [GuideStar Number (GSN) 5444].

Pragya has [Special Consultative Status](#) with the United Nations Economic and Social Council (UN ECOSOC). The organisation advocates for the well-being of indigenous communities and vulnerable groups and the conservation of fragile natural ecosystems at various international forums.

CURRENT OUTREACH



Pragya works across India with a central coordination office at Delhi NCR and field offices in 8 northern states/Union Territories for project implementation in:

- marginalised rural areas
- urban slums & peri-urban settlements



Pragya Programmes:
Progress made during the year

LIVELIHOODS & FOOD SECURITY

PHOTO: Pragma



- **22 Local Agri-Clinics** and **76 youth Agri-Advisors** delivered agri-extension services to **12226 smallholder farmers** in Uttarakhand, Assam, Rajasthan, Bihar, West Bengal
- **1789 farmers** benefitted from farmer field school sessions at **14 R&D plots** managed by farmer experts from local communities
- **5066 farmers+** trained in new technologies and improved farming practices
- Evaluation findings from Rajasthan, Bihar show that average earnings of **marginal farmers** (owning <1 hectare of land) increased by 15 times, and those of **small farmers** (owning 1-2 hectares of land) increased by 4.85 times.

Small and marginal farming households suffer multi-dimensional poverty and chronic food insecurity. Climate change-induced stress, lack of technical knowledge and capacity render them vulnerable.

Pragya team continued to build the capacity of local youth, small farmers in the Himalayas, foothills and northern arid belt and flood plains for climate-smart agriculture with special emphasis on high-value cash crops and medicinal plants cultivation. This year the initiative was expanded to cover the delta and coastal belt as well. Local Agri Clinics and Agri-Support Centres set up by Pragya remained focal points in delivering weather information, soil testing services, and cropping advice. A series of online educative and demonstrative sessions, teleconferences, training and workshops were conducted involving technical experts considering the COVID-19 protocols. The dedicated Agri-helplines at each Agri-Clinic and a toll-free helpline at the HO provided advice and problem-solving support to farmers. Field staff continued to provide special assistance to the farmers cultivating cash crops and medicinal plants. Pragya also established post-harvest facilities for shared use by farmers, to enhance value and improve the marketability of produce. The staff assisted farmers in registering cooperatives and organising buyer-seller meetings.

Female extension workers trained by Pragya continued to deliver near-at-hand services to female farmers. Women's SHGs were equipped with gender-friendly tools and provided training on their usage, resulting in improved quality of work, reduced labour, and an increase in productivity.

ENVIRONMENT AND ENERGY

PHOTO: Pragma



- Ecosystem health being regularly monitored across by **52 trained youth**
- **48 demonstration plots** and **2212 early adopters** promoting medicinal and aromatic plants cultivation
- **1000 children** and **60,000+** radio listeners reached through various conservation education campaigns
- **20 traditional healers** involved in the documentation of local ethnobotany and Conservation Education and Stewardship actions

The country's rich biodiverse sites and critical ecosystems are under threat with some having lost more than 70% of their original habitat due to anthropogenic pressure compounded by the adverse effects of climate change.

Continuing its work towards the conservation of biodiversity and ecosystems Pragma built the capacity of early adopter farmers, and facilitated Farmer Field Schools at demonstration plots for peer-to-peer learning to promote the cultivation of high-value medicinal and aromatic plant species as cash crops to reduce unsustainable wild harvest. We delivered training on Agro-Technologies for Medicinal & Aromatic Plants and Organic Cultivation in collaboration with National Medicinal Plants Board (NMPB), Ministry of AYUSH, GoI and Defence Institute of High Altitude Research.

Pragma set up Community Conservation Councils to lead local-level conservation actions for the protection of natural habitats and endangered species and continued to build the capacity of youth trained as Young Himalayan Conservationists. Radio play and wall art were done to sensitise people on conservation. Pragma conducted workshops to build community stewardship in biodiversity conservation, providing training on various methods of conservation methods and assisting communities in developing an action plan for conservation.

"I used to read about medicinal plants and organic farming and wanted to cultivate them. Now I am cultivating cultivating Bacopa monnieri (Brahmi), Valeriana jatamansi (Tagar), Asparagus racemosus (Shatavari) and Rubia cordifolia (Manjistha). I host Farmer Field Schools to train others about the cultivation protocols."

Sushil Semwal
Progressive Farmer
Bhatwari Village, Uttarkashi,
Uttarakhand, INDIA



EDUCATION

PHOTO: Pragma



- **105 out-of-school children** reached by mobile 'School on Wheels'
- **1 cyclone-affected school** rebuilt and upgraded with the solar-powered ICT facilities
- **8900 extension workers and youth** benefitted from online training delivered through Capacity Building Hub and and ICT-enabled training centres
- **293 women and girls** attended digital literacy training

Quality of education provision across India, especially in rural areas remains extremely inconsistent, resulting in poor learning outcomes. The challenges are exacerbated by gender disparity, the digital divide, and poor infrastructure.

Pragma continued the service delivery through the Resource Centres and 'School on Wheels' to provide access to educational services to out-of-school children in remote rural settlements. Pragma staff worked with parents and village councils for participatory management of education and addressing barriers to education. Village-level sessions were held to sensitise parents on the benefits of continuing education, harmful traditions of child marriage, etc. Priority issues and related action plans were developed and executed following a participatory process.

Pragma team delivered training designed with support from two dedicated Expert Networks for Health and Livelihood domains (Basic and Advanced levels) through the Capacity Building Hub at the HO in Gurgaon and ICT-enabled training centres located at its field offices. The team developed course modules, with learning objectives, theoretical modules, and audio-visual training products, assignments and evaluation tools for the same. Pre and post-course assessments revealed that the learning levels had been enhanced by 45% in the health domain and 26% in the livelihood domain. Pragma also developed and conducted Digital Literacy training to enhance the accessibility of the courses.

EQUITY FOR WOMEN & MARGINALISED GROUPS

PHOTO: Pragma



- Gender-sensitisation campaigns reached **2243 community members**
- **781 women and adolescent girls** benefit from Peer Support Groups to resist violence and access to village-level **Women's Empowerment Centres**
- **4101 women farmers** benefitting from dedicated training sessions and livelihoods facilitation services; **11836 people** aided through Helplines
- **1609 women and out-of-work daily wage workers** benefitted from enterprise support for crafts, tailoring, mask making; **59 women's SHGs** benefit from Gender Friendly Tools

Violence and discrimination against women and girls take myriad forms in their own families as well as in the community including trafficking, intimate partner violence, the high gender gap in participation in public bodies, harmful social practices, and economic violence.

Pragma continued its work to prevent violence through Peer Support Groups engaging women and adolescent girls, leadership building and facilitating economic opportunities. Women's Empowerment Centres equipped with learning resources, ICT facilities and handloom production units were established by Pragma at the village level. The centres provide information on legal provisions and training on digital literacy, and potential vocations to women and girls. Buyer-seller meets, the creation of digital product catalogues and the use of E-commerce platforms have facilitated market linkages for the handloom products. Responding to the effects of the COVID-19 pandemic, Pragma provided training, tools, and protective gear to informal service sector workers who had lost their jobs and desired to take up alternative livelihoods.

Pragma continued to strengthen livelihood service delivery to female smallholder farmers via trained female Agri-Advisors, providing weather information, soil test, and other guidance. The team equipped women's SHGs with suitable gender-friendly tools for tilling, plantation, weeding, harvesting, and post-harvest processes to reduce the burden of agricultural work on women.

"Now women and adolescent girls approach me directly and seek guidance on gender issues. I will raise my voice always, and I can also help other girls and women to fight against injustice."

Rajni Devi
Women's Peer Group Member
Ghagra Kachari Village, Sonitpur
Assam, INDIA



WATER, SANITATION AND HEALTH

PHOTO: Pragya



Poor access to safe water, sanitation and healthcare has a direct implication on maternal and newborn health. Rural health facilities are severely under-resourced, which left them overwhelmed while coping with the COVID-19 pandemic. Frontline workers fighting against the pandemic, performing tasks including regular door-to-door surveillance were ill-equipped in terms of protective clothing and hygiene supplies.

Pragya continued to deliver basic health check-up services, and conduct specialised health camps for vulnerable communities in rural areas. It also set up contactless handwashing facilities to combat the spread of COVID-19. The team provided large quantities of face masks, gloves, PPE Kits, sanitisers, etc to frontline workers (community health workers – ASHA, ANMs, Anganwadi workers, local police) enabling them to carry out their functions safely. Radio broadcasts, SMS campaigns, and awareness sessions were conducted on sanitation, nutrition, reproductive health, prevention and control of COVID-19, myth-busting, vaccination, etc

Pragya team continued to work with government hospitals, police, and District Disaster Management Authorities to equip rural medical facilities and state-run quarantine centres with food supplies, 35 oxygen concentrators, 370 pulse oximeters, and 258 infrared thermometers. Counselling sessions were conducted in collaboration with the National Institute of Mental Health & Neuro Sciences (NIMHANS) benefiting frontline health workers to aid them to cope with their stress in carrying out their pandemic-related functions.

- **3254 community members** benefitted through health camps
- **10690 migrant and informal workers** received food and hygiene kits
- **12800 people** benefitted from contactless wash basins
- **116562 community healthcare workers, paramedical and disease surveillance staff** benefitted from N-95 masks, oxygen concentrators, counselling sessions
- **420000+ beneficiaries** reached through health awareness sessions, COVID-19 and vaccination awareness campaigns in 20 rural districts and 7 urban slums

DISASTER MANAGEMENT

PHOTO: Pragya



Communities in remote, fragile ecosystems are threatened by multiple hazards and are regularly subject to disasters. These communities are typically poor and have low disaster resilience. The frequency and intensity of natural hazards have been increasing and the ongoing COVID-19 pandemic adds to the challenges.

As part of scaling up its innovation 'DMS Himalaya' in the western and eastern Himalayas, the team presented the model and the evidence generated through the pilot application of the model to government officials (SDMAs, DDMA, Deputy Commissioners and District Magistrates). Pragya collaborated with the nodal institutions for developing the hazard profiles for the new zones and conducting intensive training for Disaster Response Teams. Trained local youth Disaster Response Teams conducted Hazard Risk Vulnerability Capacity Assessment (HRVCA) surveys. Automated weather stations were set up to monitor environmental parameters in close coordination with the government. Setting up monitoring networks in other districts is underway. Training for village councils was conducted in collaboration with the National Institute of Disaster Management (NIDM) to build community leadership in disaster management.

Pragya team continued to reach out with emergency supplies for food and hygiene items to communities under extreme stress due to COVID-19 and worked to complement the efforts of National and local Disaster Management Authorities in combatting COVID-19.

- **1420 local youth** trained in vulnerability assessments, search and rescue, first aid
- Automated weather stations set up to monitor **46 village clusters**
- **304 village councils** trained for community leadership in disaster management
- Campaigns on disaster preparedness had an outreach to **600,000+ people**
- Hazards and vulnerability mapping conducted involving **4437 community members** from **1400+ villages**

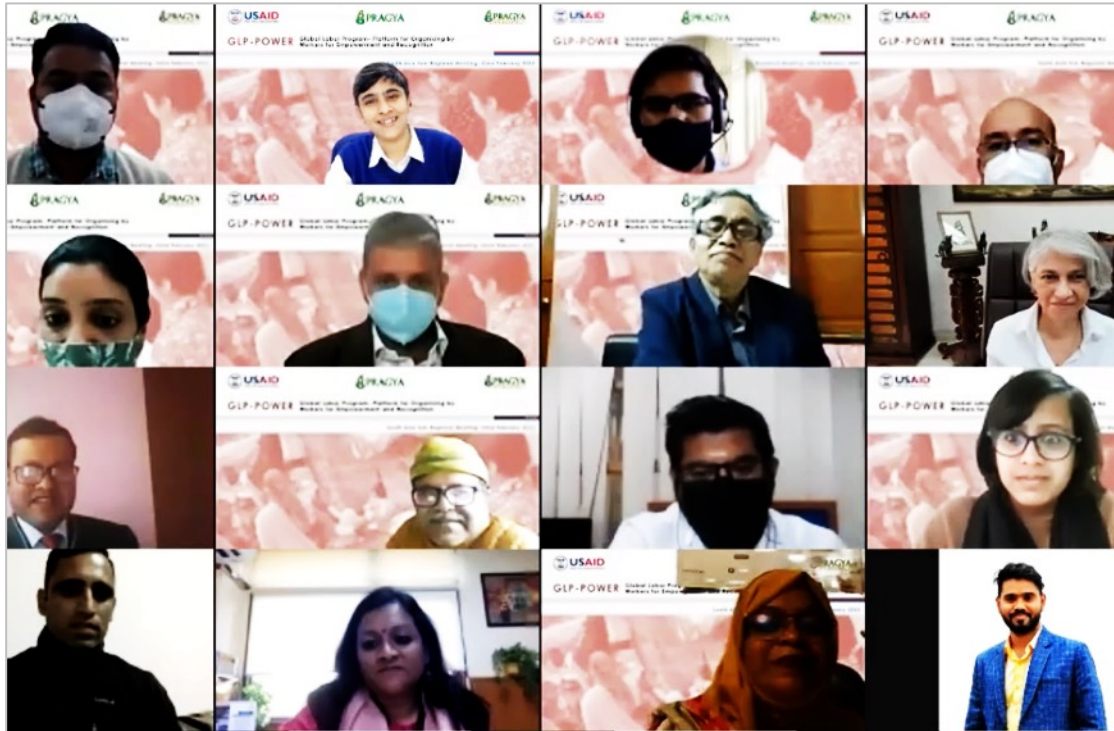
“We have a weather machine here. We collect data from it. We find out what is the temperature, the amount of rainfall. We also use a river gauge to measure water levels. If water level goes too high up, we alert people.”

Vikram Panwar
Devgram Village, Chamoli,
Uttarakhand, INDIA



RESEARCH & ADVOCACY

PHOTO: Pragma



Pragya collected detailed information on farmer incomes, access to services, soil productivity etc to serve as a baseline for its new climate-smart agriculture initiative in West Bengal. Pragya undertook consultative research with technical experts on hazards profiles and monitoring technologies for disaster preparedness in the western and eastern Himalayas. It undertook a baseline survey of people's capacities and the level of disaster preparedness in these two regions.

The team worked with an external evaluator to carry out a rigorous evaluation of its ongoing initiative towards climate adaptation in agriculture and income enhancement for smallholder farmers in Assam and Uttarakhand, documenting the effectiveness, and learnings for the next phases of the programme. Pragya also concluded a detailed participatory end-term evaluation of a similar programme on enhancing the income of farmers in Rajasthan and Bihar.

The organisation designed and hosted grassroots multi-stakeholder consultations to improve the well-being of migrant and informal workers in Delhi NCR, Kolkata, Rajasthan, Assam and West Bengal. Later it convened a Research Advisory Panel to design Participatory Action Research in this regard. It also carried out research on ICT access and the digital literacy level of informal workers. Pragya participated in research led by ELRHA on successful scaling strategies for humanitarian innovation. Pragya staff participated in a panel discussion by UNTF EVAW on Learning from Practice on ending violence against women in Asia.

HOW WE DO IT

Our Human Resources

Our Pragya team comprises dedicated professionals across a range of disciplines including management, social work, law, environmental science, engineering, soil science, disaster management and communications. Together we work towards achieving holistic and sustainable development for the last-mile communities in the remote Himalayan mountains, deserts, flood plains and coastal zones as well as urban slums in India. Our staff members devote their time towards empowering local communities so that they can take charge of designing and adopting sustainable solutions for sustainable development. The team implements programmes in both the conservation and development spheres through innovative approaches and engages with key local stakeholders to strengthen ongoing initiatives and build local capacity and stewardship.

Existing Operations

Pragya implements developmental programs and undertakes participatory action research and policy advocacy. Recognising the inter-linkages and cross-cutting nature of various sectors, the organisation has evolved over the years to adopt a diverse portfolio. The operations are guided by the headquarters at Gurgaon (Delhi NCR) and executed on the ground by a network of competent Field Offices across eight states and union territories in India.

The Pragya team implements programmes in partnership with local communities, anchoring key grassroots services and knowledge-sharing processes with the community members themselves. The Pragya interventions enhance competence and confidence of communities to sustainably adapt to climate change, withstand disasters, nurture their cultural and natural heritage and strive towards the Sustainable Development Goals (SDGs). The programmes establish and strengthen various grassroots structures to respond to local needs and enhance self-reliance.

Pragya India has about 45 staff at its Head Quarters in Gurgaon, and about 80 staff and 148 extension workers located across its 18 field offices. Pragya's thematic Programs teams based at the head office lead the implementation and provide technical inputs for thematic area-specific programmes. It has dedicated Research, Communication and MIS teams to anchor participatory research, documentation and evidence management, and build awareness of the critical issues and appropriate solutions. The field-office teams undertake the grassroots implementation of programmes assisted by the Monitoring and Coordination Team based in the head office.



Statement of Accounts and Balance Sheet

Balance Sheet as on March 31, 2022		Income and Expenditure for the year ended March 31, 2022	
Sources of Funds	Amount (in INR)	Income	Amount (in INR)
General Fund	18,015,577	Grants and Donations	88,785,660
Unspent Grant	56,427,957	Interest & other income	16,46,707
Total	74,443,534	Total	90,432,367
Application of Funds	Amount (in INR)	Expenditure	Amount (in INR)
Fixed assets	15,763,890	Direct project cost	92,624,540
Investments	42,988,890	Administrative cost	40,80,385
Current Assets (A)	16,117,318		
Current Liabilities (B)	426,565		
Net Current Assets	15,690,753		
Total	74,443,534	Total	96,704,925



Address: 83, Sector-44 Institutional Area
Gurgaon 122003 Haryana, India.

Phone: +91 124 4947000

Email: pragyain@pragya.org

Website: www.pragya.org